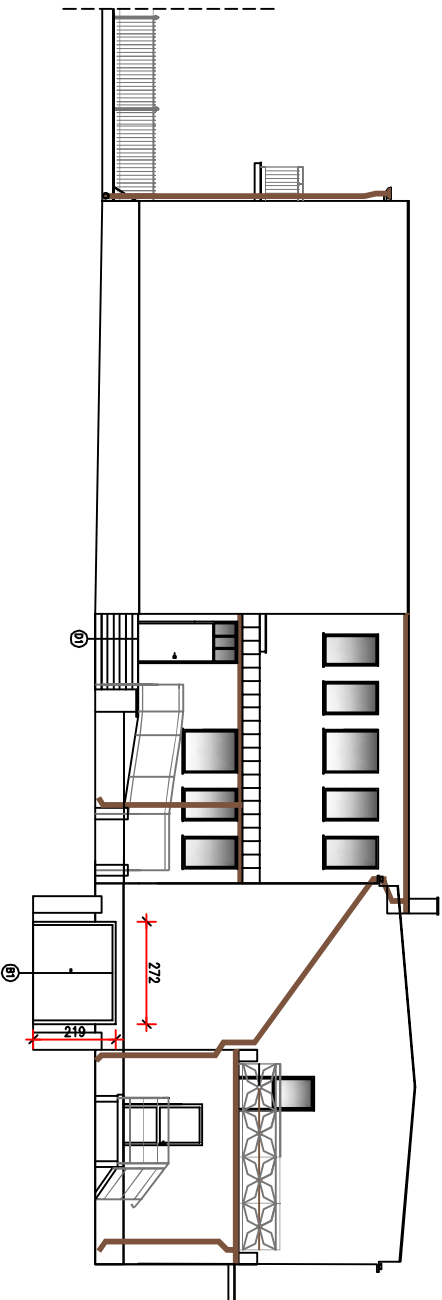
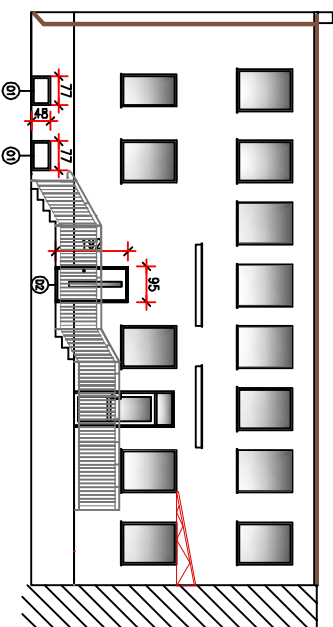


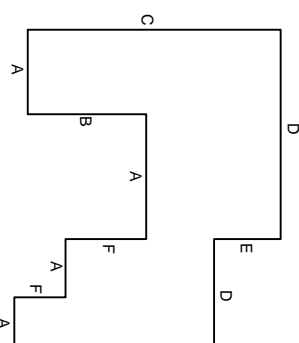
# ELEMACJA A



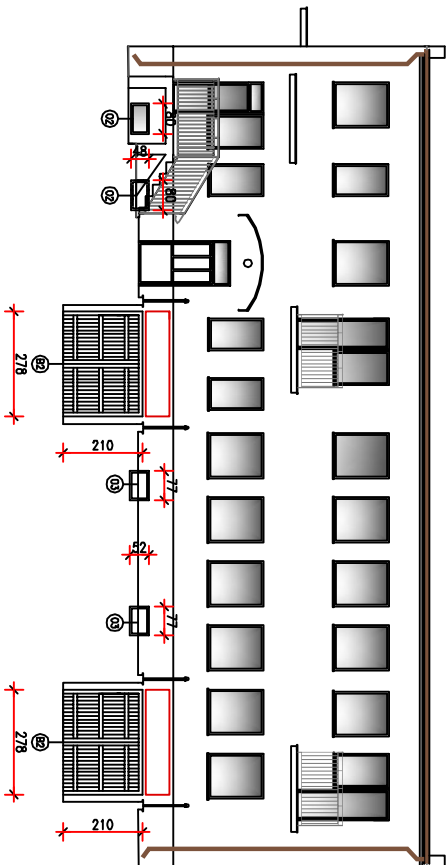
# ELEWACJA B



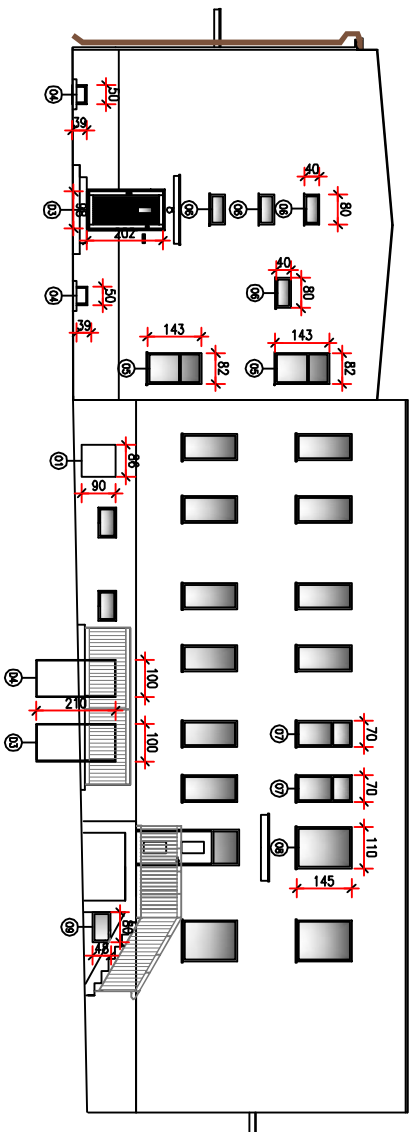
## RZUT SYTUACYJNY



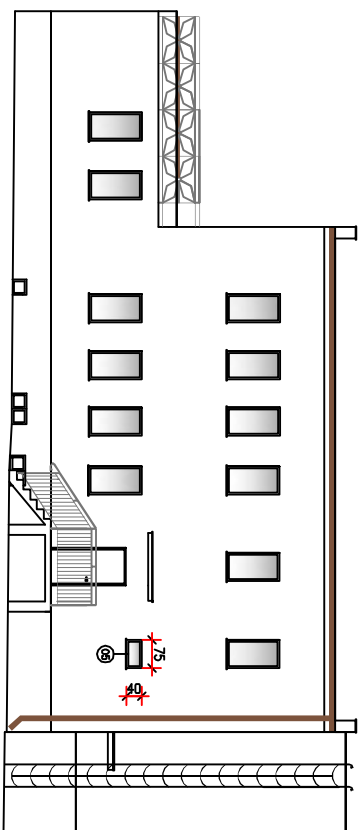
## ELEWACJA C



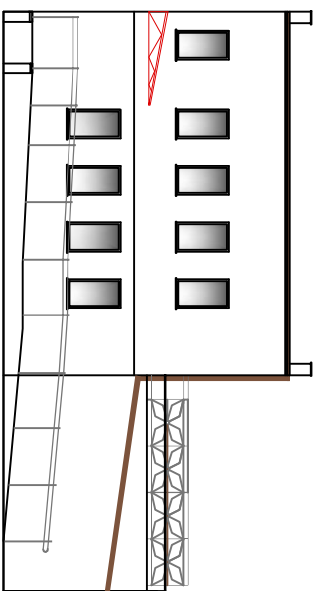
## ELEWACJA D













































## ELEWACJA E




## ELEWACJA F



Donnerstag	01	02	03	04	05	06	07	08	09
Opel	<div>Abf. 10:00 Anf. 10:30</div>	<div>Abf. 11:00 Anf. 11:30</div>	<div>Abf. 12:00 Anf. 12:30</div>	<div>Abf. 13:00 Anf. 13:30</div>	<div>Abf. 14:00 Anf. 14:30</div>	<div>Abf. 15:00 Anf. 15:30</div>	<div>Abf. 16:00 Anf. 16:30</div>	<div>Abf. 17:00 Anf. 17:30</div>	<div>Abf. 18:00 Anf. 18:30</div>
Schmet	<div><div></div></div>	<div><div></div></div>	<div><div></div></div>	<div><div></div></div>	<div><div></div></div>	<div><div></div></div>	<div><div></div><div></div></div>	<div><div></div></div>	<div><div></div></div>
	<div>77 48 2</div>	<div>80 48 2</div>	<div>77 52 2</div>	<div>50 39 2</div>	<div>82 143 2</div>	<div>80 40 4</div>	<div>70 145 2</div>	<div>110 40 1</div>	<div>75 1 1</div>

Opce	D1	D2	D3	D3	D4	B1	B2
							
Schmakt							
							
							
							
							
110	55	96	100	100	272	278	
215	137	202	210	210	419	410	
1	1	1	1	1	1	2	

Uwaga: wszystkie wymiary dotyczące stolarki okiennej i drzwiowej należy wykonać w naturze.	
WISZYSTKOST	
Gmina Dragacz	
Dragacz 7A, 86-134 Dragacz	
RODZAJ	<p><b>Komplexowa modernizacja energooszczędna wraz z przebudową kotłowni w budynku Gminnej Przychodni Zdrowia w Dolnej Grupie</b></p>
LOKALIZACJA	ul. Akademiowa 1, Dolna Grupa
	
<p><b>Biuro Projektowe Budowlnictwa "PSBUD" mgr inż. Piotr Śmierzński</b></p> <p>ul. Chemiczna 115/20, 86-200 Olsztyn          tel. kom. 602-87-77, tel. fax. (60) 425 85-60          Przewodni tel. Chemiczna 115/20, 86-200 Olsztyn</p>	
Zestawienie stolarki okiennej i drzwiowej	
WYKAZ MATERIAŁÓW	<p>STALOWA</p> <p>1,100</p> <p>Budowlana</p>
TYTUŁOWA	<p>AUTOR:</p> <p>mgr inż. Piotr Śmierzński</p>
PROJEKTANT	<p>mgr inż. Piotr Śmierzński</p> <p>KOPIOWISKO/RODZAJ</p> <p>Budowlana</p>
DATA	<p>09.2017</p> <p>WYKAZ MATERIAŁÓW</p> <p>S1</p>